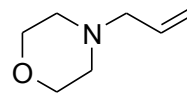


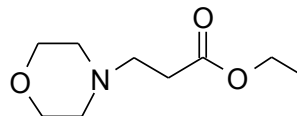
DM-1000 N-Allyl-morpholine
C₇H₁₃NO
127.19 CAS: 696-57-1

98%



DM-1001 Ethyl-3-morpholino-propionate
C₉H₁₇NO₃
187.24 CAS: 33611-43-7

98%



DM-1002 3-Morpholinopropanol
C₇H₁₅NO₂
145.20 CAS: 4441-30-9

98%

